

IT Roundup
Lubbock and Permian Basin
April 2024

Leslie Medina
AVP IT Client Services



TEXAS TECH UNIVERSITY
HEALTH SCIENCES CENTER_{SM}

Agenda

IT Round up

- Departmental Updates
- Q & A

Technology Upgrades and Projects

EMS Replacement – CollegeNet 25Live

- Brings more flexibility for scheduling rooms and study spaces
- Migration to 25Live Summer 2024 with Fall classes scheduled in 25Live

Replacement of Polycom Infrastructure

- Polycom bridges to be replaced this summer with ZOOM infrastructure
- Streamlined scheduling of rooms and conferencing/ AV
- Replacing Polycom will save a minimum of 150K annually



Technology Upgrades and Projects

Lubbock PSL 3rd Floor- Installation planned for August

- 30 new study room with displays, solstice pods and glass boards
- Large open study space with video walls for signage and presentations

LBK HSC 1C100, 1C102, 1C120, 1C124

- Removing Polycom equipment for conversion to ZOOMrooms
- Supports managed video conferencing similar to Polycom system
- POC funded by IT Division

The logo for Zoomrooms, featuring the word "zoom" in a bold, blue, lowercase sans-serif font, followed by "rooms" in a lighter, grey, lowercase sans-serif font.

Vulnerability Management

- Renewed focus on vulnerability scanning
 - *Department admins may receive notifications from security regarding end of life systems or those needing patch remediation*
- Zscaler web gateway
 - *Safeguards against malicious links, and improve security while web browsing*
 - *Additional testers needed before full deployment*
 - *Available in the self-service software installation portal*

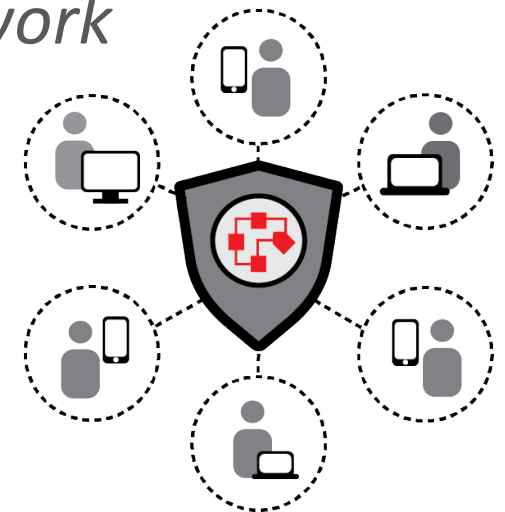


Networking Update

Network Segmentation and BYOD Network

Creating separate networks for TTUHSC equipment and personal devices

- Deployment for all Wi-Fi planned for week of June 3rd.
 - *Devices authenticating to HSC-Air will be granted access to the TTUHSC network if they are on the TTUHSC Domain*
 - *Non-domain machines will be directed to BYOD Network with internet access **only** including:*
 - Personal equipment
 - any unmanaged, non-domain, institutionally owned equipment

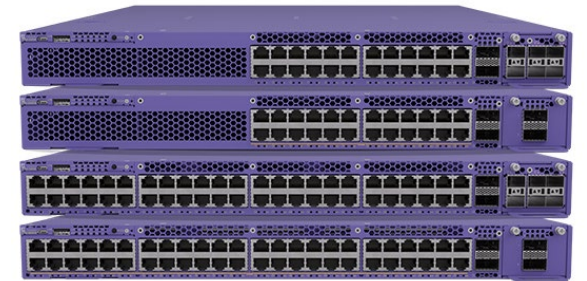


Networking Update

Network Switch and Wireless AP LCR Underway

Wireless upgrade progress- latest standard WiFi 6e

- Lubbock- DPod scheduled for May
- Odessa campus and Abilene - In Progress
 - *Midland complete*
- Amarillo SOM basement and 4th Floor complete
 - *Next: PAC, SIM then SOP*

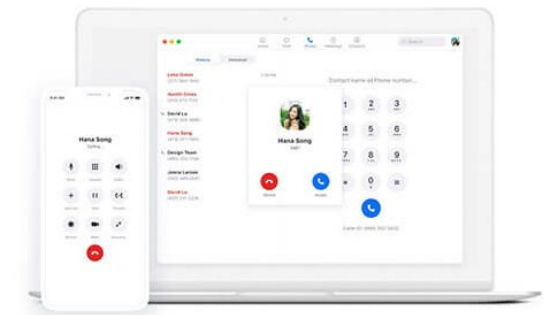


Network Switch Upgrade

- Lubbock- DPod 75%, Medical Pavilion and Heart Center complete
- Odessa 50% complete

ZOOM Phone Conversion

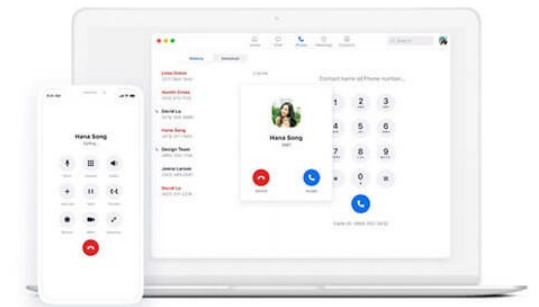
- Multiple locations in Lubbock have been converted to ZOOM phone, Dallas campus converting this week
- Visit <https://hscweb.ttuhscc.edu/it/zoom-phone/>
 - *Deployment schedule*
 - *FAQ, tutorials, etc.*
- Handsets are available, but not required
 - *Computer audio, headsets, Zoom cell phone app*
- Phone numbers will **not** change



zoomphone

ZOOM Phone Conversion

- Target completion: December 2024
- Communication Services will work with each department prior to conversion
 - *Please fill-out the discovery worksheet completely to ensure a smooth conversion*
- All staff should review ZOOM Phone tutorials prior to conversion for easy start up



zoomphone

Windows 10 to 11 Transition- *Reminder!*

- Windows 10 is **End of Life**, October 2025
 - *Microsoft indicates there will not be an extended support window*
 - *Machines with non-supported OS will not have network access*
- If you are a property custodian or administrator and are not receiving non-compatible inventory reports contact the ITSC
- Areas of concern: Research Labs, clinical spaces and any specialized equipment connected to PC's



Dell Purchasing

- Dell has released their latest line of business PCs/Laptops
 - *All lines include latest processors, improved cooling and other hardware improvements*
- New standard configurations coming soon to the punchout
 - *Targeted for early May*
- More laptops with a range of pricing and features
 - *Latitude Laptops with multiple screen options, 16" and 14" as well as 13" with detachable keyboard*



International Travel

- Contact the ITSC at least 2 weeks prior to international travel
 - *Policies are in development and may change between trips*
- VPN will be required for email access outside the United States
- Mobile Device Management (MDM) end encryption is required
- Recommendations:
 - *Remove unnecessary data from your devices*
 - Take only what you need to conduct business
 - Remove regulated and/or personal data
 - *Maintain physical custody of your devices or store in room safe*





TEXAS TECH UNIVERSITY
HEALTH SCIENCES CENTER™

Questions?